

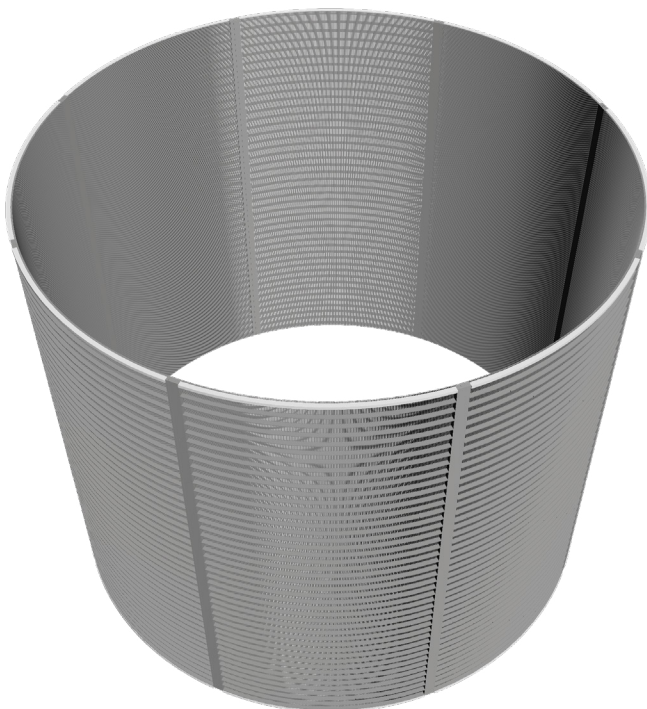


**Johnson  
Screens**

A brand of  
Aqseptence Group

## Batch Centrifuge Basket Screen

Johnson Screens' 120° Pressure Fed Boxes are used for fine solids separation. Slurry is evenly distributed through the patent pending movable nozzles and evenly pressure fed onto Vee-Wire® screens. Liquid than drains through the Vee-Wire screen slots as the solids slide to the bottom of the screen for further processing.



### Features and Benefits

- Constructed from 316L stainless steel (other options available upon request)
- Available in single, double and triple screen units
- Sight doors to monitor flow conditions
- Process flow designed for even distribution through nozzles that can increase screen life by up to 30%
- External nozzle adjustment limits SO<sub>2</sub> exposure
- Flexible nozzle hoses for easier nozzle adjustment
- Food grade seals and door clamps greatly reduces leakage
- Oversized doors allow for easier screen cleaning
- Two step screen removal system, limits SO<sub>2</sub> exposure and reduces maintenance time by changing screen outside of the box
- 316L, 304 and Duplex Vee-Wire screens available in .015, .020 and .030 in. slot size

**Johnson Screens**  
Industrial and Architectural Screens

North and South America  
Phone +1 651 636 3900  
info.us@johnsonscreens.com

Europe, Middle East & Africa  
Phone +3 3 23 75 05 42  
info.fr@johnsonscreens.com

Asia Pacific  
Phone +61 7 3867 5555  
info.au@johnsonscreens.com

[johnsonscreens.com](http://johnsonscreens.com)