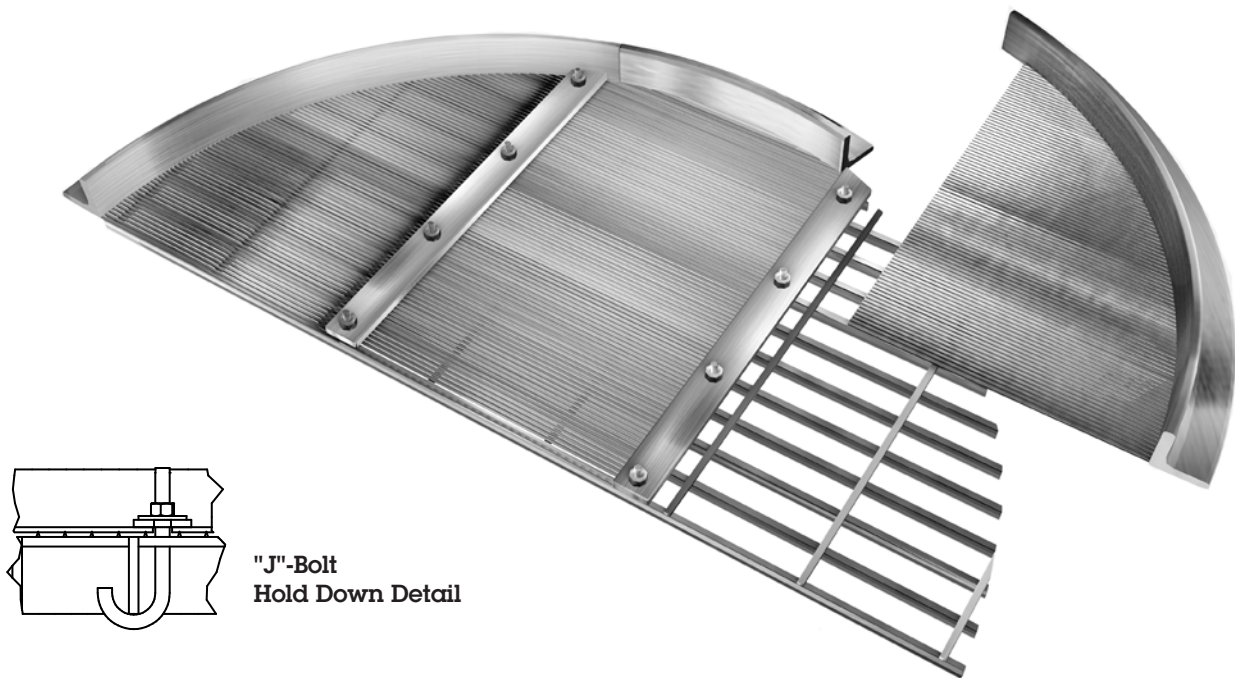


A brand of
Aqseptence Group

Overlay Screens

Johnson Screens' Vee-Wire screen overlays can cut turnaround time and reduce system costs



"J"-Bolt
Hold Down Detail

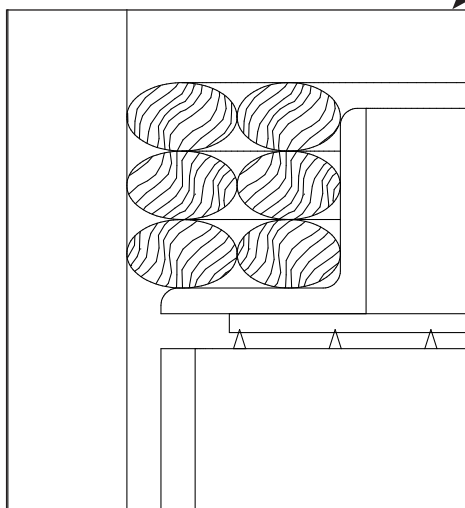
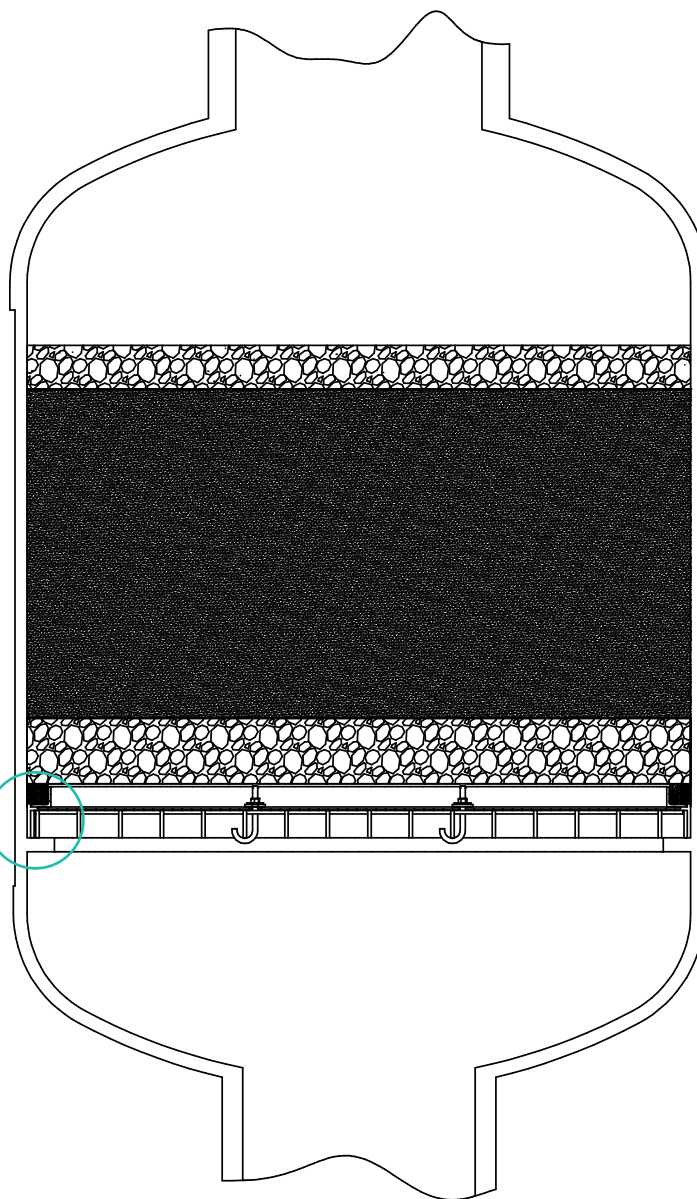
All downflow systems use screen internals to retain the treatment media. In many cases, this internal will be a circular grating resting on top of a support ring inside the vessel. This grating is typically covered with one or more layers of wire mesh.

The grating seldom needs replacement but the covering wire mesh is subject to wear and tear. In time, extensive patching or total replacement of the wire mesh is needed to prevent bed leakage. Such maintenance can be extremely costly and involve a considerable amount of down-time.

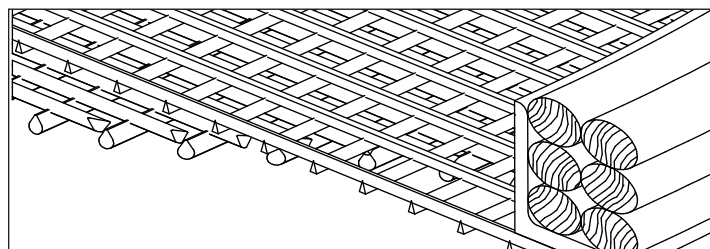
One solution to this problem has been to replace both the grating and wire mesh with the Johnson Vee-Wire support grid. While this is still the recommended course on new vessel construction, a faster, more economical way has been developed for retrofit applications: the Johnson Vee-Wire screen overlay.

- The overlay replaces the wire mesh. Your system continues to use your existing gratings while benefiting from the superior performance of the Vee-Wire screens.
- The Johnson Vee-Wire screens, unlike wire mesh, feature clog-resistant slot openings and much higher resistance to damage from impact, or abrasion.
- Screen overlays are supplied, pre-cut to size, with all installation hardware and edge sealing materials for faster retrofit.
- Overlay screens are designed and manufactured to client specific applications and processes. Slot sizing, wire size selection, material recommendations and final designs are recommended by our experienced engineering staff, providing clients with designs they can be confident will last for years to come.

- **Reduced Turnaround Time**
Overlays are prefabricated, ready for quick shipment and installation.
- **Reduced Operating Costs**
Non-plugging screens have high open area for increased efficiency.
- **Reduced Maintenance**
All-welded stainless steel overlays are exceptionally strong and long lasting.



Perimeter Sealing Detail



Screen Construction Detail

Aqseptence Group, Inc.
Oil and Gas Screens

North and South America
Phone +1 651 636 3900
Fax +1 651 638 3177
info.johnsonscreens.us@aqseptence.com

www.aqseptence.com