



**Johnson  
Screens**

A brand of  
Aqseptence Group

## Shur-Pak™ Glass Bead Filter Pack

Easier to install than traditional filter pack, Shur-Pak™ is stronger, chemically inert and are almost perfect spheres – virtually eliminating bridging during installation that can be an issue in traditional filter pack.

Shur-Pak Glass Beads are used as an upgrade from traditional filter packs for water wells. Shur-Pak is easy to handle and can be sized and installed using similar methods and techniques.

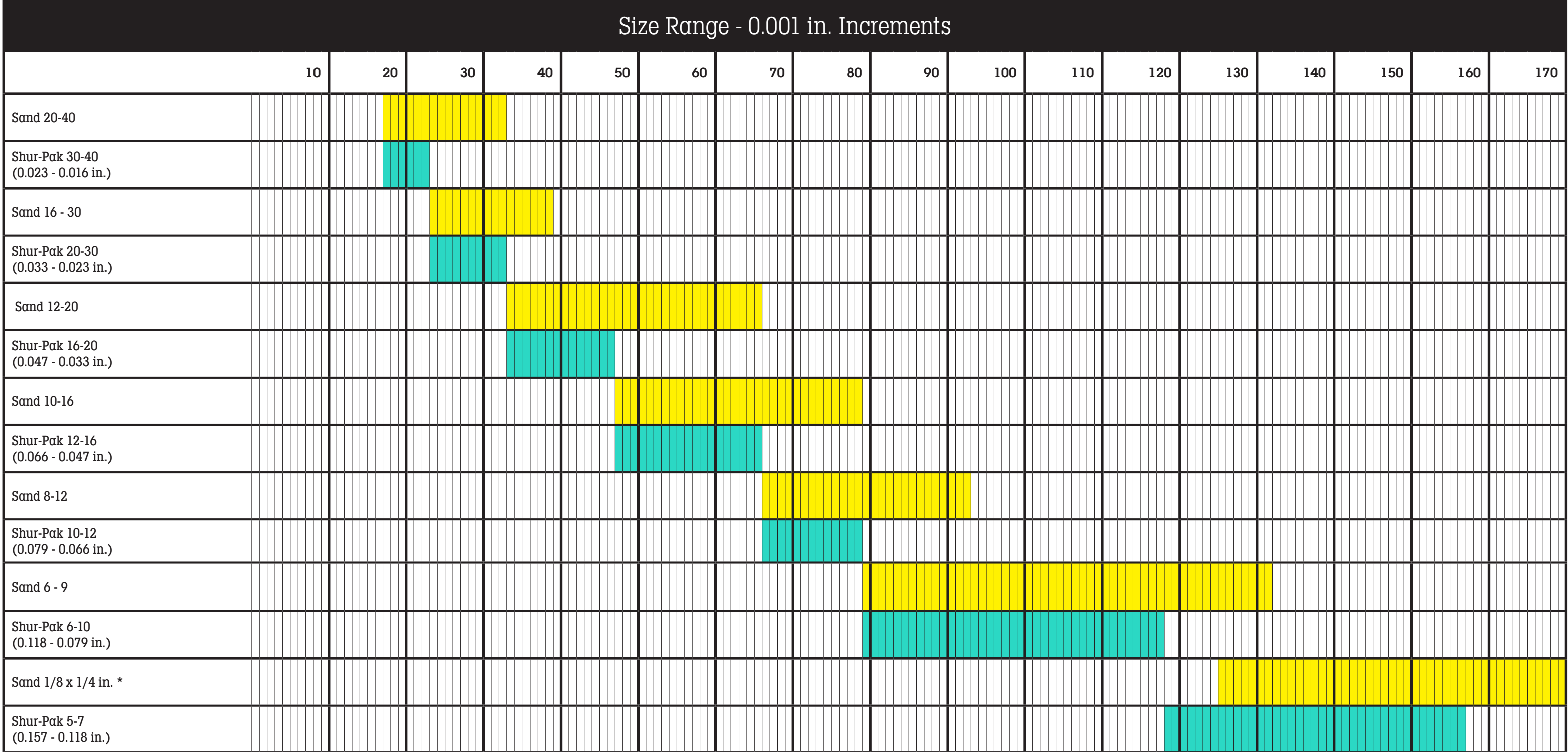
### Features and Benefits

Glass beads for filter packs in water wells provide:

- Uniform and consistent bead size
- Stronger crush strength than gravel
- Simple to install and greatly reduces bridging
- Less compaction over the well life
- Faster development than gravel (40% - 60% reduction of time)
- Higher well efficiency
- Less loss of capacity from reduced bio-fouling and mineral scaling
- Extended operation intervals between well rehabilitation
- Easy to clean and chemical resistance
- Reduced operational costs
- Available in 1 metric ton sacks and 25 kg bags
- NSF/ANSI/CAN Standard 61 - Drinking Water System Components Certified

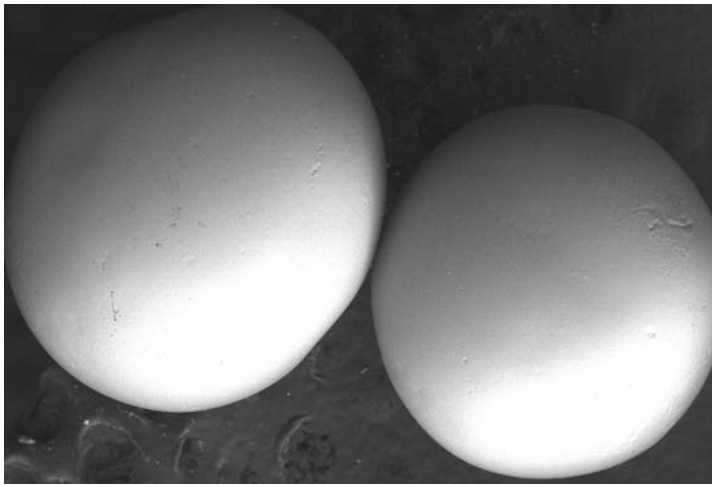


# Shur-Pak Sizing Chart vs Sand



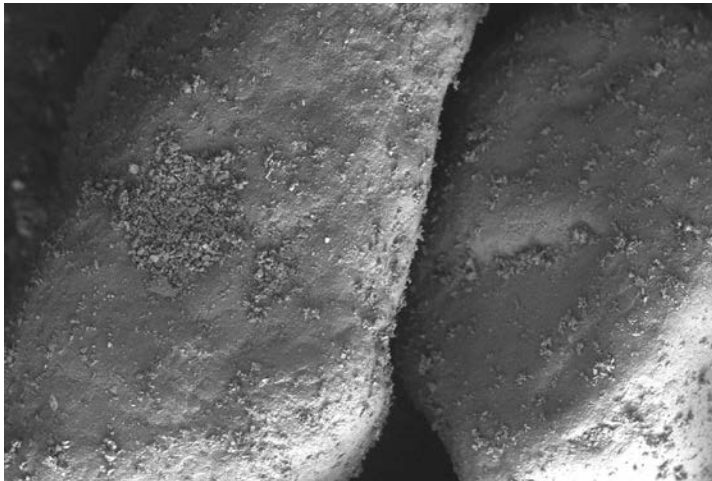
\*Data extends off the graph

# Shur-Pak Sizing



16-20 Shur-Pak beads magnified 50x with a scanning electron microscope (SEM)

Product Description	US Mesh	Bead Diameter (in.)	Bead Diameter (mm)	Bulk Density (lb. ft. <sup>3</sup> )
Shur-Pak 30-40	30 - 40	0.023 - 0.016	0.6 - 0.4	101.13
Shur-Pak 20-30	20 - 30	0.033 - 0.023	0.85 - 0.6	101.13
Shur-Pak 16-20	16 - 20	0.047 - 0.033	1.0 - 0.85	101.13
Shur-Pak 12-16	12 - 16	0.066 - 0.047	1.7 - 1.4	101.13
Shur-Pak 10-12	12 - 10	0.079 - 0.066	2.0 - 1.7	100.51
Shur-Pak 6-10	6 - 10	0.118 - 0.079	3.0 - 2.0	99.88
Shur-Pak 5-7	5 - 7	0.157 - 0.118	4.0 - 3.0	98.01



8-12 Sand magnified 35x under a scanning electron microscope (SEM)

## Chemical and Physical Properties

Parameter	Description
Physical Form	Solid, odorless, transparent, soda lime glass beads
Mean Roundness by Bead Diameter	>93%
Hardness	≥6.0-6.7 on Mohs scale
Melting point	1450 – 1500 deg C
Deformation temperature	580 – 650 deg C
Uniformity Coefficient	1.1 to < 1.45
Acidic Resistance (according to DIN 12116)	S2 Acid Resistant
Specific Gravity	>2.45

## Chemical Composition

Composition	Percentage
Silicon Dioxide SiO <sub>2</sub>	69.6%
Sodium Oxide Na <sub>2</sub> O	13.3%
Calcium Oxide CaO	10.9%
Magnesium Oxide MgO	4.23%
Aluminum Oxide Al <sub>2</sub> O <sub>3</sub>	1.17%

### Aqseptence Group, Inc. Water Well Screens

North and South America  
 Phone +1 651 636 3900  
 Fax +1 651 638 3177  
 info.johnsonscreens.us@aqseptence.com  
[www.aqseptence.com](http://www.aqseptence.com)