

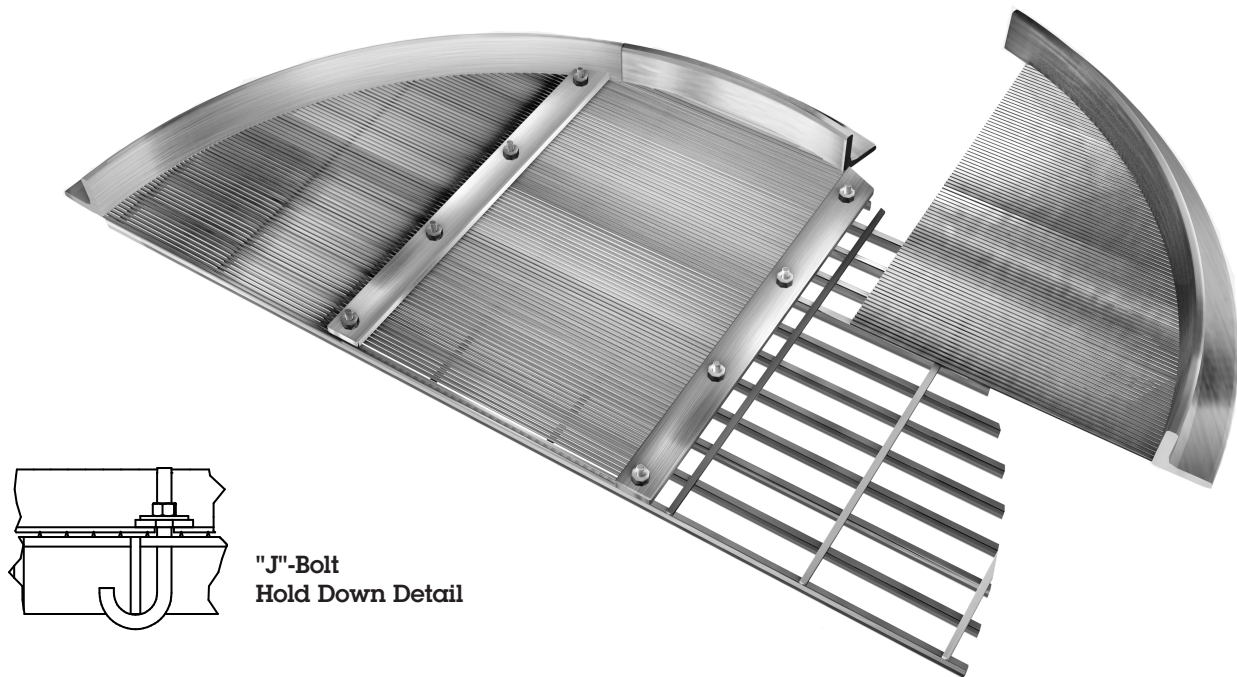


**Johnson  
Screens**

A brand of  
Aqseptence Group

## Overlay Screens

Johnson Screens' Vee-Wire screen overlays can cut turnaround time and reduce system costs



"J"-Bolt  
Hold Down Detail

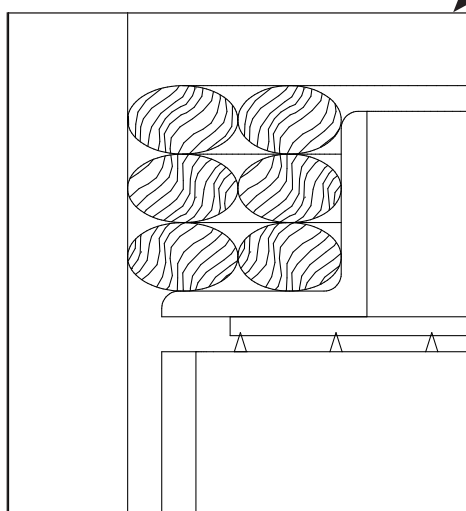
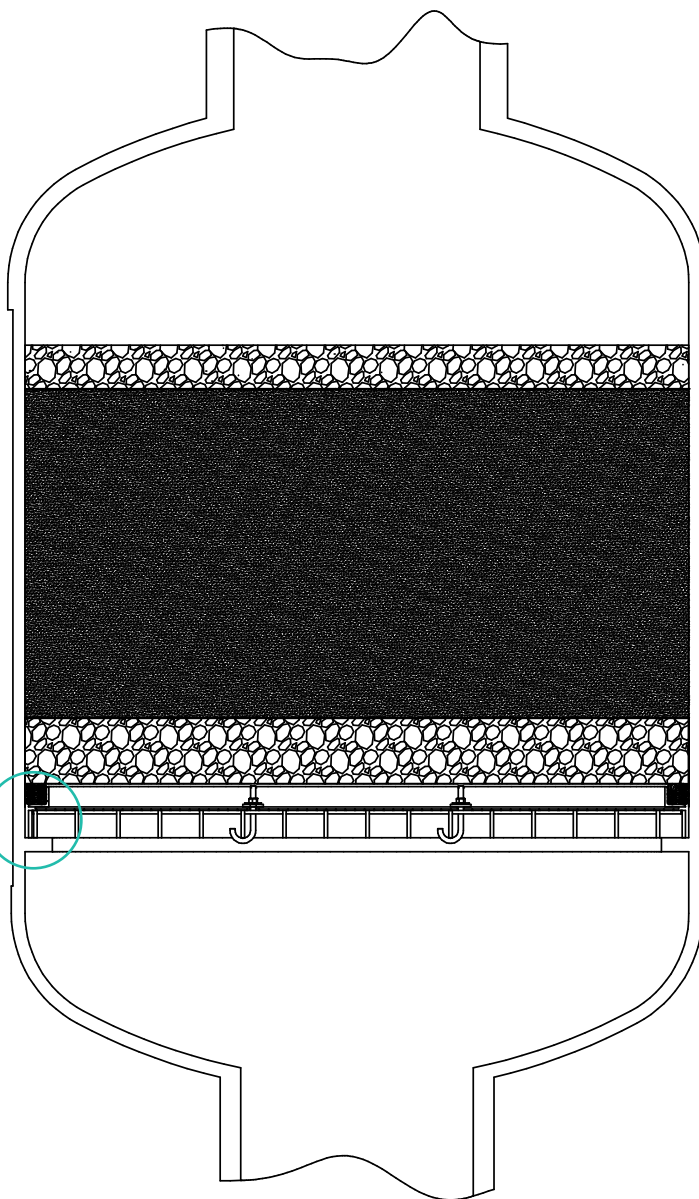
All downflow systems use screen internals to retain the treatment media. In many cases, this internal will be a circular grating resting on top of a support ring inside the vessel. This grating is typically covered with one or more layers of wire mesh.

The grating seldom needs replacement but the covering wire mesh is subject to wear and tear. In time, extensive patching or total replacement of the wire mesh is needed to prevent bed leakage. Such maintenance can be extremely costly and involve a considerable amount of down-time.

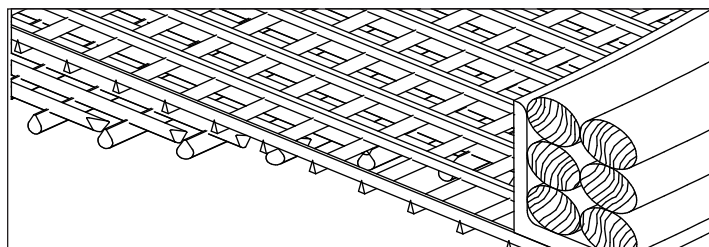
One solution to this problem has been to replace both the grating and wire mesh with the Johnson Vee-Wire support grid. While this is still the recommended course on new vessel construction, a faster, more economical way has been developed for retrofit applications: the Johnson Vee-Wire screen overlay.

- The overlay replaces the wire mesh. Your system continues to use your existing gratings while benefiting from the superior performance of the Vee-Wire screens.
- The Johnson Vee-Wire screens, unlike wire mesh, feature clog-resistant slot openings and much higher resistance to damage from impact, or abrasion.
- Screen overlays are supplied, pre-cut to size, with all installation hardware and edge sealing materials for faster retrofit.
- Overlay screen are designed and manufactured to client specific applications and processes. Slot sizing, wire size selection, material recommendations and final designs are recommended by our experienced engineering staff, providing clients with design they can be confident will last for years to come.

- **Reduced Turnaround Time**  
Overlays are prefabricated, ready for quick shipment and installation.
- **Reduced Operating Costs**  
Non-plugging screens have high open area for increased efficiency.
- **Reduced Maintenance**  
All-welded stainless steel overlays are exceptionally strong and long lasting.



**Perimeter Sealing Detail**



**Screen Construction Detail**

## Johnson Screens Energy and Processing Technologies

North and South America  
Phone +1 651 636 3900  
info.us@johnsonscreens.com

Europe, Middle East & Africa  
Phone +3 3 23 75 05 42  
info.fr@johnsonscreens.com

Asia Pacific  
Phone +61 7 3867 5555  
info.au@johnsonscreens.com

[johnsonscreens.com](http://johnsonscreens.com)

© 2022 Aqseptence Group, Inc. All rights reserved. Aqseptence Group, Inc. assumes no liability for possible errors in catalogs, brochures and other printed material. The technical data in this brochure is subject to change and for illustrative purposes only and should not be applied as published to your individual case. Aqseptence Group reserves the right to alter its products without notice. Any reproduction, distribution, display or use of this information in whole or in part without written authorization of Aqseptence Group is strictly prohibited.

22-EPT-0013-v1-4-Eng