



**Johnson
Screens**

A brand of
Aqseptence Group

Shur-Pak™ Glass Bead Filter Pack

Easier to install than traditional filter pack, Shur-Pak™ is stronger, chemically inert and are almost perfect spheres – virtually eliminating bridging during installation that can be an issue in traditional filter pack.

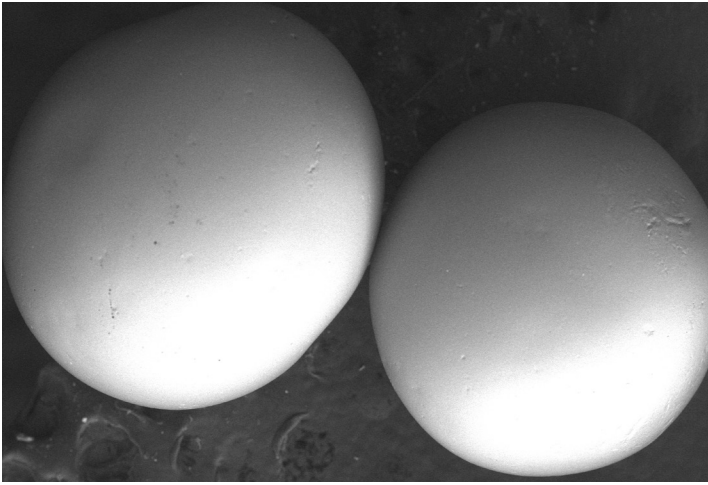
Shur-Pak Glass Beads are used as an upgrade from traditional filter packs for water wells. Shur-Pak is easy to handle and can be sized and installed using similar methods and techniques.

Features and Benefits

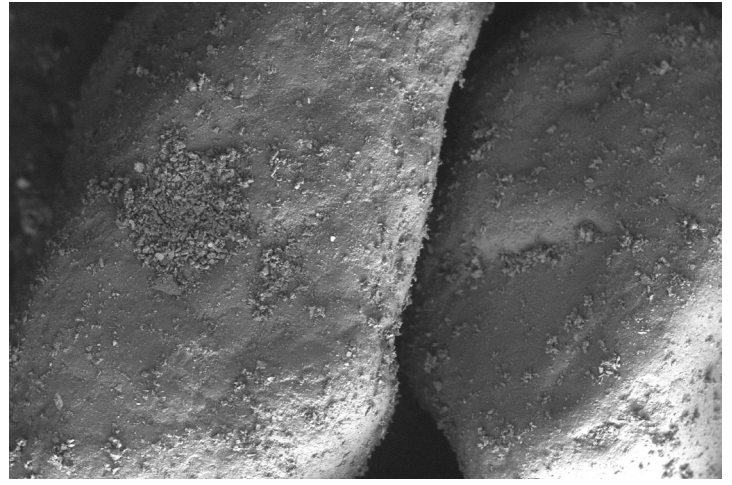
Glass beads for filter packs in water wells provide:

- Uniform and consistent bead size
- Stronger crush strength than gravel
- Simple to install and greatly reduces bridging
- Less compaction over the well life
- Faster development than gravel (40% - 60% reduction of time)
- Higher well efficiency
- Less loss of capacity from reduced bio-fouling and mineral scaling
- Extended operation intervals between well rehabilitation
- Easy to clean and chemical resistance
- Reduced operational costs
- Available in 1 metric ton sacks and 25 kg bags
- NSF/ANSI/CAN Standard 61 - Drinking Water System Components Certified





16-20 Shur-Pak beads magnified 50x with a scanning electron microscope (SEM)



8-12 Sand magnified 35x under a scanning electron microscope (SEM)

Shur-Pak Sizing

| Available Shur-Pak™ Bead Diameters | Bulk Density (lb. ft. ³) |
|---------------------------------------|---|
| Shur-Pak: 0.85 - 1.00 mm | 101.13 |
| Shur-Pak: 1.18 - 1.40 mm | 101.13 |
| Shur-Pak: 1.70 - 2.00 mm | 100.51 |
| Shur-Pak: 2.50 - 3.00 mm | 99.88 |
| Shur-Pak: 3.50 - 4.00 mm | 98.01 |

Chemical Composition

| Composition | | Percentage |
|-----------------|--------------------------------|------------|
| Silicon Dioxide | SiO ₂ | 69.6% |
| Sodium Oxide | Na ₂ O | 13.3% |
| Calcium Oxide | CaO | 10.9% |
| Magnesium Oxide | MgO | 4.23% |
| Aluminum Oxide | Al ₂ O ₃ | 1.17% |

Chemical and Physical Properties

| Parameter | Description |
|---|---|
| Physical Form | Solid, odorless, transparent, soda lime glass beads |
| Mean Roundness by Bead Diameter | >93% |
| Hardness | ≥6.0-6.7 on Mohs scale |
| Melting point | 1450 – 1500 deg C |
| Deformation temperature | 580 – 650 deg C |
| Uniformity Coefficient | 1.1 to < 1.45 |
| Acidic Resistance (according to DIN 12116) | S2 Acid Resistant |
| Specific Gravity | >2.45 |

Johnson Screens Water Well Screens

North and South America
Phone +1 651 636 3900
info.us@johnsonscreens.com

Europe, Middle East & Africa
Phone +3 3 23 75 05 42
info.fr@johnsonscreens.com

Asia Pacific
Phone +61 7 3867 5555
info.au@johnsonscreens.com

johnsonscreens.com