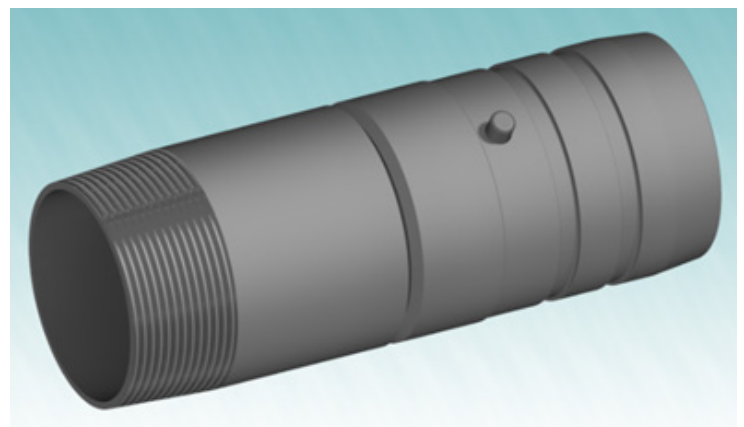
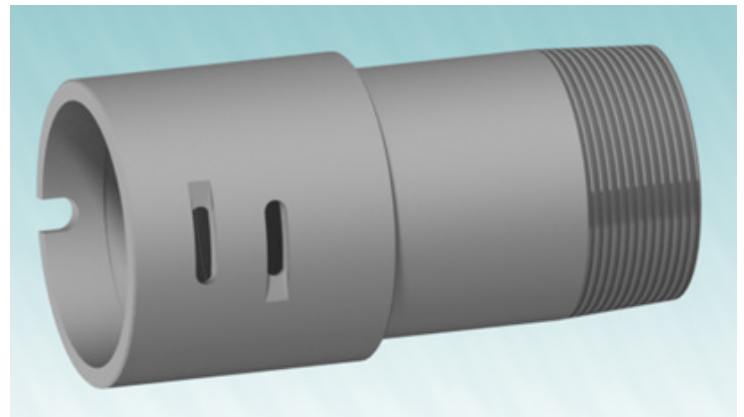


JSL Standard Drop Pipe

The JSL Standard is part of the JSL Family of spline-lock, anti-rotational drop pipes. It has a stud-in-notch design to prevent torque rotation from pump startup. This design utilizes a nylon spline which allows for a reduction in size and weight on the fittings, when compared to JSL Deep, resulting in cost savings for customers.



Features

- Dual Button Spline Assembly
- O-ring for leak-free seal
- No Tools required
- NPT adapters available for easy pump connections

Benefits

- Quick Installation
- Easy to assemble and disassemble
- No torque rotation from pump start up
- Can be set up to 1,200 feet deep
- No welding
- No threading



Nominal Pipe Size (in)	Male OD (in)	Female OD (in)	Tensile Strength (lbs)	Pressure Rating* (psi)	Depth Rating** (ft)
2	2.38	2.87	6,500	1,500	1,200
3	3.50	4.00	11,500	1,500	1,000
4	4.50	5.00	15,500	1,500	950
6	6.63	7.50	24,000	1,000	750

*2" - 4" Pipe sizes tested to 2,000 PSI and 6" tested to 1,500 PSI with no leaking

**Calculated using Schedule 40 pipe and water column weight only

Note: Consider JSL Deep for more extreme applications.

Johnson Screens Water Well Screens

North and South America
Phone +1 651 636 3900
info.us@johnsonscreens.com

Europe, Middle East & Africa
Phone +3 3 23 75 05 42
info.fr@johnsonscreens.com

Asia Pacific
Phone +61 7 3867 5555
info.au@johnsonscreens.com

johnsonscreens.com