

## StaySafe™ Floating Hold-Down Screen

### Applications

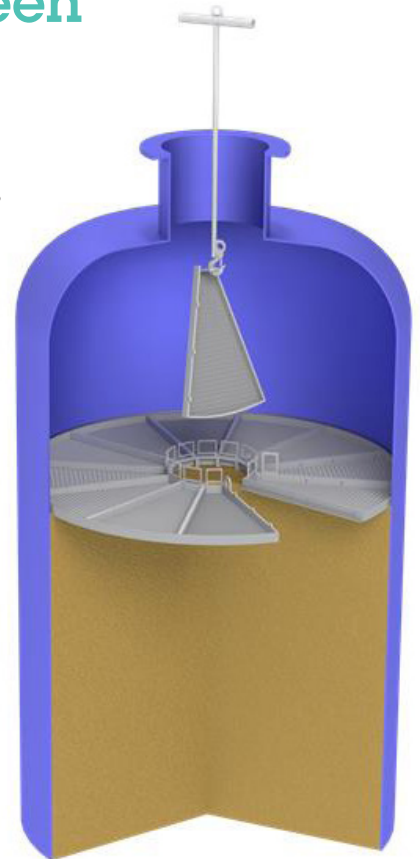
- No-Entry Extraction™ of screen to access media bed
- Down-Flow reactors with pyrophoric and potentially volatile environments
- Reduces the need to enter the confined space of vessels
- Helps with compliance to corporate directives for entering vessels to remove screens

### Benefits

- Keeps workers safe by not requiring entry into potential hazardous, confined space of a vessel
- Disassembly and removal of screen panels through the vessel manway without entry
- Simplified and faster installation of the screen
- Facilitates faster media-bed turn-around
- Components securely captured to eliminate potential of falling into the vessel during extraction
- Glass rope seal is removed along with the screen

### Features

- Screen can be completely removed from a vessel from outside of the vessel manway
- Unique locking hub design and panel capture tabs
- Simplified design reduces amount of machining required
- No tools required for installation
- Center hub unlocks all screen components with a single motion

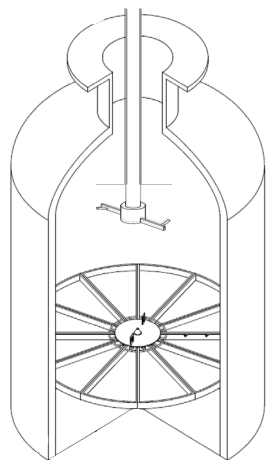


### **New design and features allow extraction of the StaySafe™ Floating Hold-Down Screen without personal needing to enter a pyrophoric or volatile vessel environment**

The uniquely designed StaySafe™ Floating Hold-Down Screen keeps workers safe by not requiring entry into potential hazardous, confined space. The center hub unlocks all screen components with a single motion, allowing the capture tabs to facilitate secure removal from the vessel from over 6' away, through the manway of the vessel. No other company offers a product that can be fully disassembled and removed without vessel entry. Enhance worker safety and increase media turnaround efficiency.

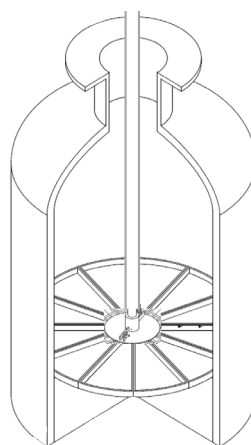
Extract all components in less time than current designs, lowering turn-around cost and increasing uptime, and optimizes vessel performance. Get the most out of your vessels with the StaySafe™ Floating Screen by Johnson Screens.

## Extraction of StaySafe™ Floating Screen Removal Process



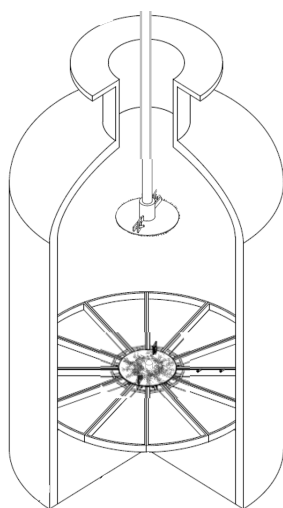
### Step 1:

- Insert Rotation/Capturer Tool Into Vessel



### Step 2:

- Center Tool on Locking Hub
- Rotate Hub to Release and Capture



### Step 3:

- Extract Locking Hub From the Vessel



### Step 4:

- Connect the Hook to the Grid Panel
- Extract Each Grid Panel Through the Manway

## Summary

The uniquely designed StaySafe™ Floating Screen keeps workers safe by not requiring entry into potential hazardous, confined space. This is critical not only for the safety of workers, but also for companies to stay compliant with OSHA law 1910.146 'Permit, No-Permit Confined Space Entry'; and API Z117.1 and NFPA350 'Safe Confined Space Entry' requirements without emptying vessels.

The ease of use to extract all components of the screen piece by piece in less time than current designs allow without disturbing the media lowers operation cost, increases uptime, and optimizes vessel performance. Get the most out of your vessels with the StaySafe™ Floating Screen by Johnson Screens.

## Johnson Screens Energy Processing Technology

North and South America  
Phone +1 651 636 3900  
info.us@johnsonscreens.com

Europe, Middle East & Africa  
Phone +3 3 23 75 05 42  
info.fr@johnsonscreens.com

Asia Pacific  
Phone +61 7 3867 5555  
info.au@johnsonscreens.com

[johnsonscreens.com](http://johnsonscreens.com)