



**Johnson
Screens**

A brand of
Aqseptence Group

Shur-Pak™ Glass Bead Filter Pack

Easier to install than traditional filter pack, Shur-Pak™ is stronger, chemically inert and are almost perfect spheres – virtually eliminating bridging during installation that can be an issue in traditional filter pack.

Shur-Pak Glass Beads are used as an upgrade from traditional filter packs for water wells. Shur-Pak is easy to handle and can be sized and installed using similar methods and techniques.

Features and Benefits

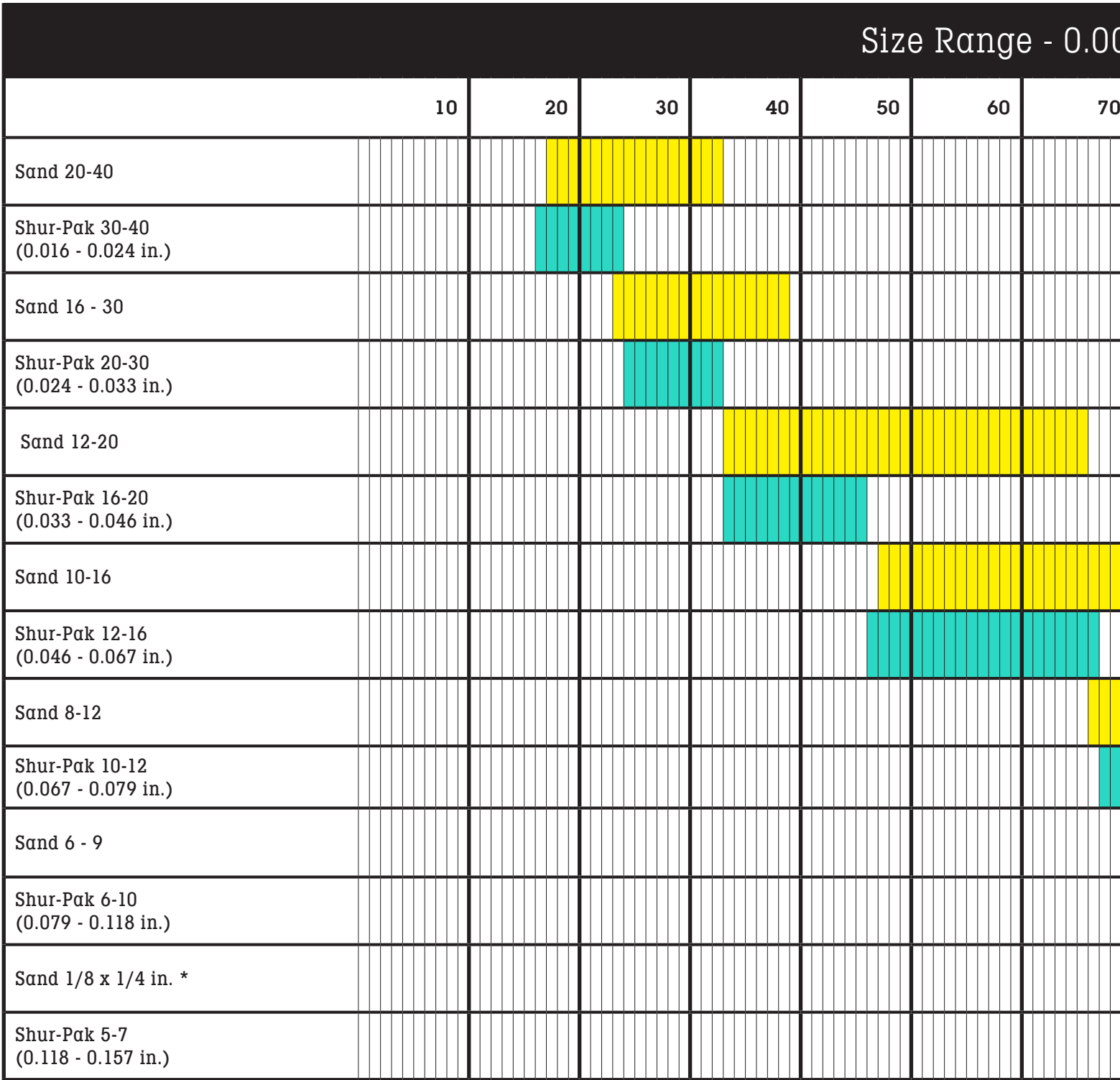
Glass beads for filter packs in water wells provide:

- Uniform and consistent bead size
- Stronger crush strength than gravel
- Simple to install and greatly reduces bridging
- Less compaction over the well life
- Faster development than gravel (40% - 60% reduction of time)
- Higher well efficiency
- Less loss of capacity from reduced bio-fouling and mineral scaling
- Extended operation intervals between well rehabilitation
- Easy to clean and chemical resistance
- Reduced operational costs
- Available in 1 metric ton sacks and 25 kg bags
- NSF/ANSI/CAN Standard 61 - Drinking Water System Components Certified

Shur-Pak glass
beads at 60x
magnification



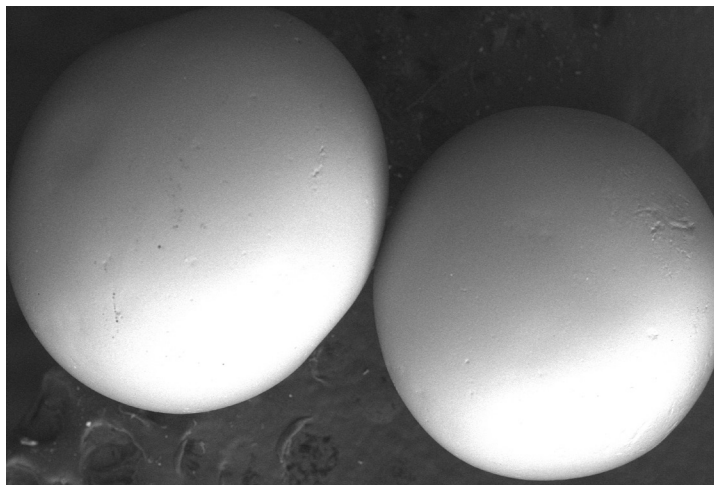
Shur-Pak Sizing Chart vs Sand



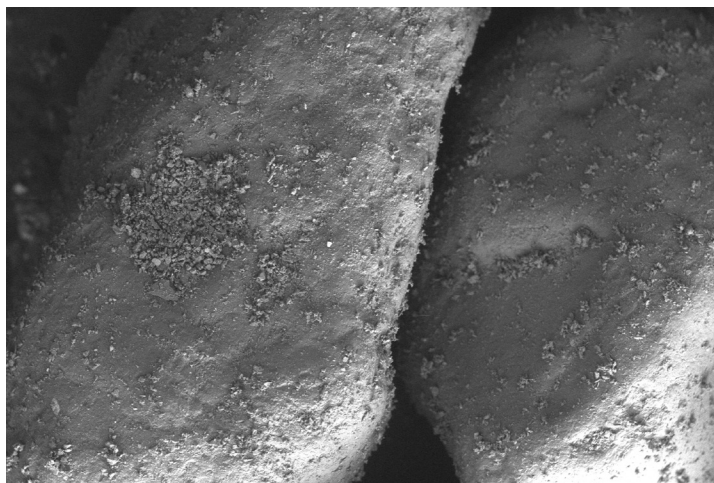
*Data extends off the graph

01 in. Increments

[illegible]



16-20 Shur-Pak beads magnified 50x with a scanning electron microscope (SEM)



8-12 Sand magnified 35x under a scanning electron microscope (SEM)

Chemical Composition

Composition		Percentage
Silicon Dioxide	SiO ₂	69.6%
Sodium Oxide	Na ₂ O	13.3%
Calcium Oxide	CaO	10.9%
Magnesium Oxide	MgO	4.23%
Aluminum Oxide	Al ₂ O ₃	1.17%

Shur-Pak Sizing

Product Description	US Mesh	Bead Diameter (in.)	Bead Diameter (mm)	Bulk Density (lb. ft. ³)
Shur-Pak 30-40	30 - 40	0.016 - 0.024	0.40 - 0.60	101.13
Shur-Pak 20-30	20 - 30	0.024 - 0.033	0.60 - 0.85	101.13
Shur-Pak 16-20	16 - 20	0.033 - 0.046	0.85 - 1.18	101.13
Shur-Pak 12-16	12 - 16	0.046 - 0.067	1.18 - 1.7	101.13
Shur-Pak 10-12	10 - 12	0.067 - 0.079	1.7 - 2.0	100.51
Shur-Pak 6-10	6 - 10	0.079 - 0.118	2.0 - 3.0	99.88
Shur-Pak 5-7	5 - 7	0.118 - 0.157	3.0 - 4.0	98.01

Chemical and Physical Properties

Parameter	Description
Physical Form	Solid, odorless, transparent, soda lime glass beads
Mean Roundness by Bead Diameter	>93%
Hardness	≥6.0-6.7 on Mohs scale
Melting point	1450 – 1500 deg C
Deformation temperature	580 – 650 deg C
Uniformity Coefficient	1.1 to < 1.45
Acidic Resistance (according to DIN 12116)	S2 Acid Resistant
Specific Gravity	>2.45

Johnson Screens Water Well Screens

North and South America
Phone +1 651 636 3900
info.us@johnsonscreens.com

Europe, Middle East & Africa
Phone +3 3 23 75 05 42
info.fr@johnsonscreens.com

Asia Pacific
Phone +61 7 3867 5555
info.au@johnsonscreens.com

johnsonscreens.com

© 2025 Johnson Screens Inc. All rights reserved. Johnson Screens Inc. assumes no liability for possible catalogues, brochures and other printed material errors. The technical data in this brochure is subject to change and for illustrative purposes only and should not be applied as published to your individual case. Johnson Screens reserves the right to alter its products without notice. Any reproduction, distribution, display or use of this information in whole or in part without the written authorization of Johnson Screens is strictly prohibited.

22-WW-0068-v2-8-Eng